



  
**HAWAII**  
Sahl Hasheesh





# Enjoy the Hawaiian Life Style

- ✓ Hurghada
- ✓ Sahl Hasheesh Location
- ✓ The Beach
- ✓ Weather in Red Sea
- ✓ Sahl Hasheesh
- ✓ Investment Opportunity
- ✓ Hawaii Sahl Hasheesh
- ✓ Types & Designs
- ✓ Invest in Hawaii
- ✓ FAQ





# Hurghada

A city founded in the early 20th century as a small fishing village, in recent years Hurghada has exploded into the ultimate holiday destination for Europeans and now rivals Sharm El Sheikh for the title of Egypt's liveliest resort area.

With its own bars, restaurants, sports and leisure activities plus superb diving and snorkeling, it promises an experience that is second to none.

Situated at the lower end of the Gulf of Suez to the North and Safaga and Soma Bay to the South and with a seashore stretching 40 km, Hurghada is the centre of aquatic sports. It provides the ultimate Arabian escape from sailing, windsurfing, deep-sea fishing and swimming, to snorkeling and diving.

Founded in the 20th century as a fishing village, the warm waters here are ideal for many varieties of rare fish and coral reefs, which may also be observed through glass bottom boats.



# Location

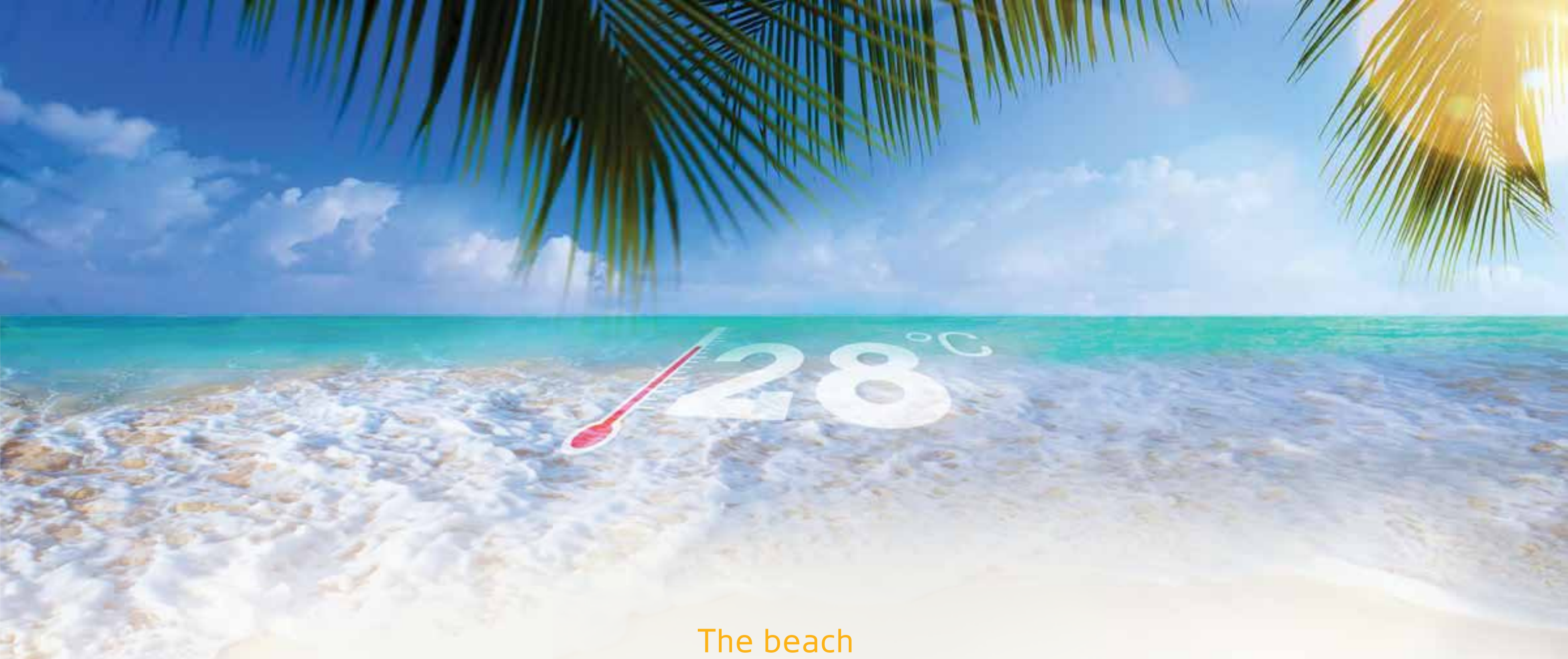
Sahl Hasheesh is a unique, purpose built destination, beautifully situated along an 11-kilometer shoreline and around a 7-kilometer sandy bay on the Red Sea Coast of Egypt. Only 18 kilometres south of Hurghada International Airport and 20 kilometres south of the city of Hurghada, the resort city is readily accessible within 25 minutes of arrival. And just 15 minutes to biggest shop – Senzo Mall and 20 minutes from International school and Hospital.

Its prime and highly accessible location on the Red Sea Coast is just a short flight Cairo (under 1 hour), the United Kingdom and major European cities (2-4 hours). With several airlines offering direct flights to Hurghada and other Red Sea destinations, more than 50% of all tourists to Egypt fly directly to the Red Sea.

 [Show on Google maps](#)







## The beach

Few locales in the world can boast of a coastline like the one that bounds the Sahl Hasheesh Bay. It is one of the longest, swimmable stretches of pristine sandy beach on the Red Sea coast, spanning a total length of just over 11 kilometers. Whether you want to stroll along the beach, enjoy a picturesque sunset, swim or participate in water sports, Sahl Hasheesh Bay provides the ideal environment. For many years, Sahl Hasheesh has also been a popular destination for diving and snorkeling trips. Located a mere 1.5 kilometers from the Sahl Hasheesh coastline is Abu Hasheesh Island - a local protectorate, highly renowned for its bountiful coral and marine life, for the most avid and passionate of divers.





## Weather in The Red Sea

Like several towns along the Red Sea Coast, Sahl Hasheesh enjoys some of the finest weather in Egypt, with a warm, year - round climate, sunny skies and calm waters.

Gentle, northerly breezes prevail throughout the majority of the year, providing fresh air and comfortable conditions; allowing guests and residents the opportunity to enjoy and explore Sahl Hasheesh at any time of the year.

The Red Sea is a Scuba Divers Mecca, featuring extraordinary aquatic life. It is the habitat of over 1,000 species and 200 soft and hard corals seeking a place in the sun. The Red Sea is the destination for those corals, home of golden sand flanking its shores.





# Welcome to Sahl Hasheesh

Hawaii Resort in Sahl Hasheesh is a project developed with a Hawaiian theme leading to a conservation of natural landscape.



## Why Hawaii Resort – Sahl Hasheesh?

- To enjoy the Hawaiian life style.
- To live in the tropical landscape and fantastic waterfalls.
- To get the chance to choose from a variety of special types of units.
- To experience the unique smart interior design and luxuries finishing.
- To enjoy the amazing panoramic sea view and the resort's remarkable facilities.
- To invest in your unit through the rental services provided.



To show the other view of  
Sahl Hasheesh





## Investment Opportunity in Sahl Hasheesh

The long term vision for Sahl Hasheesh is to become a fully integrated resort city. Already, it is home to over 1,000 residences. At full build out of land forming part of the future land release, it is expected that this thriving community could employ some 90,000-100,000 people across a range of different sectors, including health care, schools, entertainment, business and retail districts; establishing Sahl Hasheesh as a significant regional center within Egypt.

Therefore, our company represent a prime investment option for first or second home owners, given the high quality of residential development by a range of community services and amenities; designed to foster an environment where one can live, work and play.







# HAWAII

Sahl Hasheesh















### Types:

- Studio 52m2
- 1Bedrooms 72m2
- Ka'ula Duplex 110 m2
- Honolulu Duplex 150m2

Taxes Free.

Maintenance fees to be paid once in life including housekeeping for 1 time per week.

### Hawaii Resort Access:

- International Airport of Hurghada- 15 minutes
- Medical centre – 20 minutes
- International school – 20 minutes
- Shopping centre Senzo Mall with several cafes, boutiques, cinema, bowling and kids area – 15 minutes
- Touristic centre – 25 minutes
- Marina – 5 minutes



Beginning



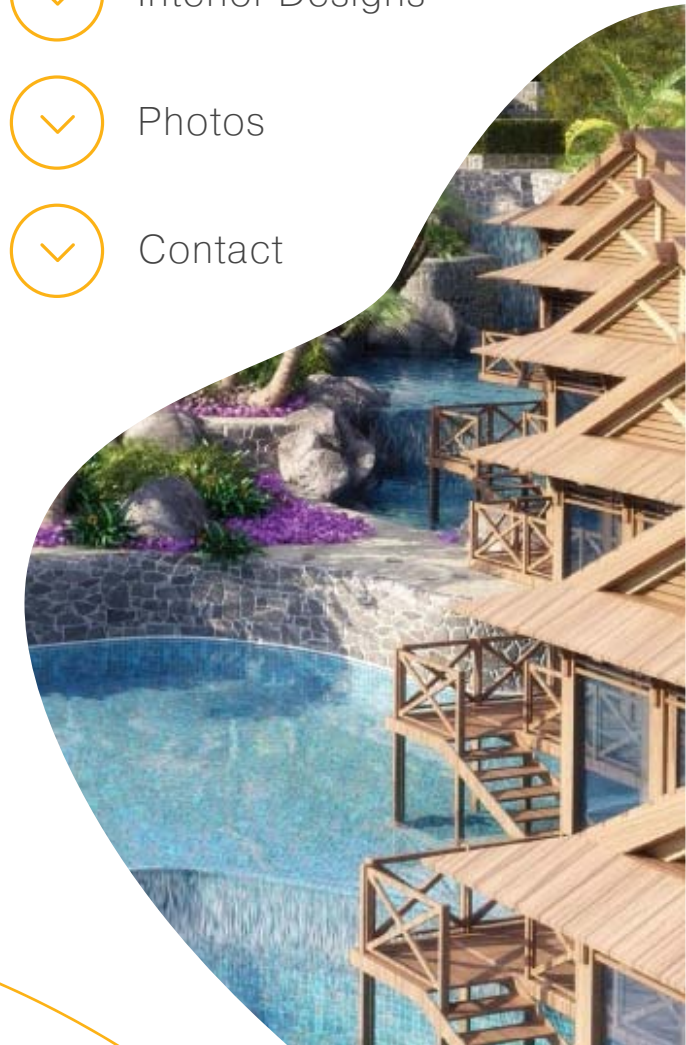
Interior Designs



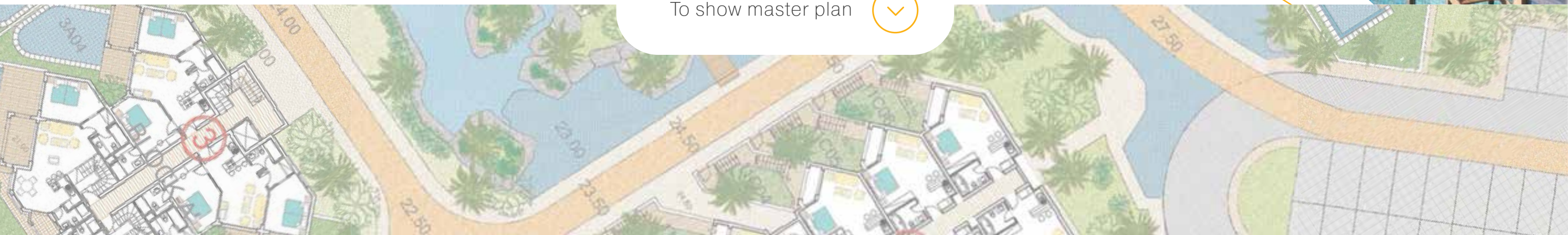
Photos



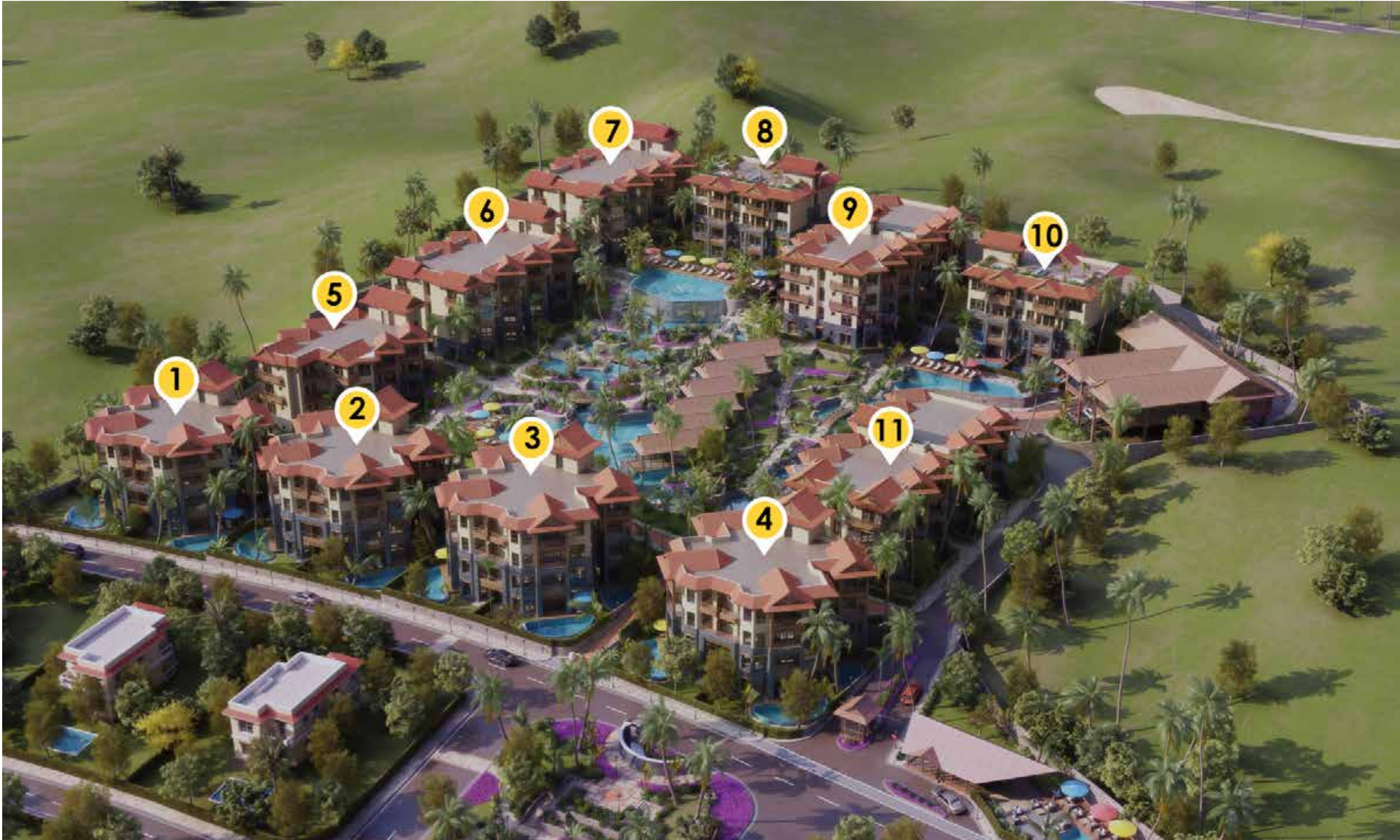
Contact



To show master plan







1

2

3

4

5

6

7

8

9

10

11



Golf

Golf



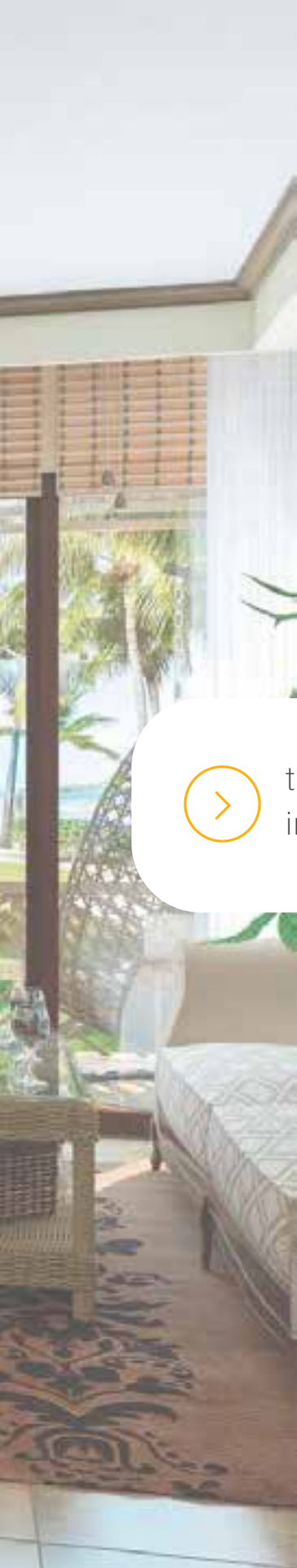












## Layout

Studio 52 sqm



to show  
interior



Beginning



Studio



1 Bedroom



2 Bedrooms



Ka'ula Duplex



Honolulu Duplex



Villa Tropicana



Facilities



Contact







Design  
Studio 52 sqm







Design  
Studio 52 sqm







Design  
Studio 52 sqm







Design  
Studio 52 sqm





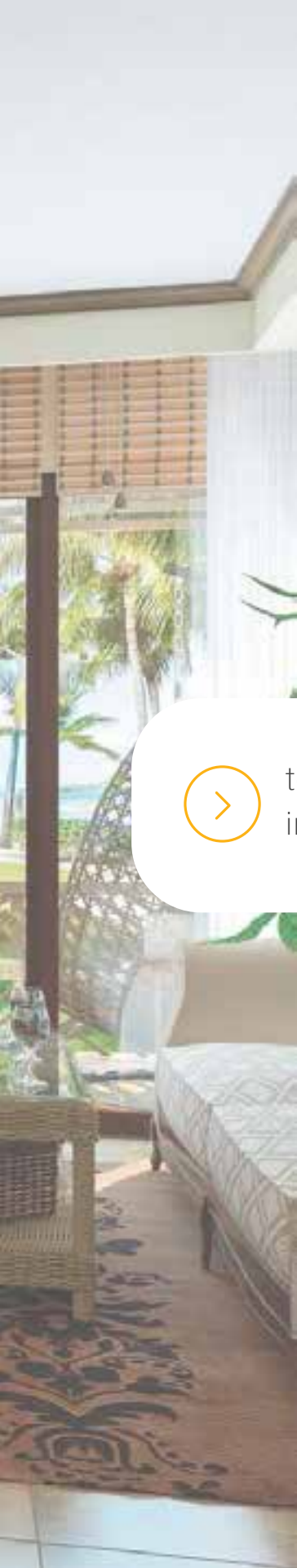


## Design

Studio 52 sqm







## Layout

1 Bedroom Apartment 72 sqm



to show  
interior



Beginning



Studio



1 Bedroom



2 Bedrooms



Ka'ula Duplex



Honolulu Duplex



Villa Tropicana



Facilities



Contact







## Design

1 Bedroom

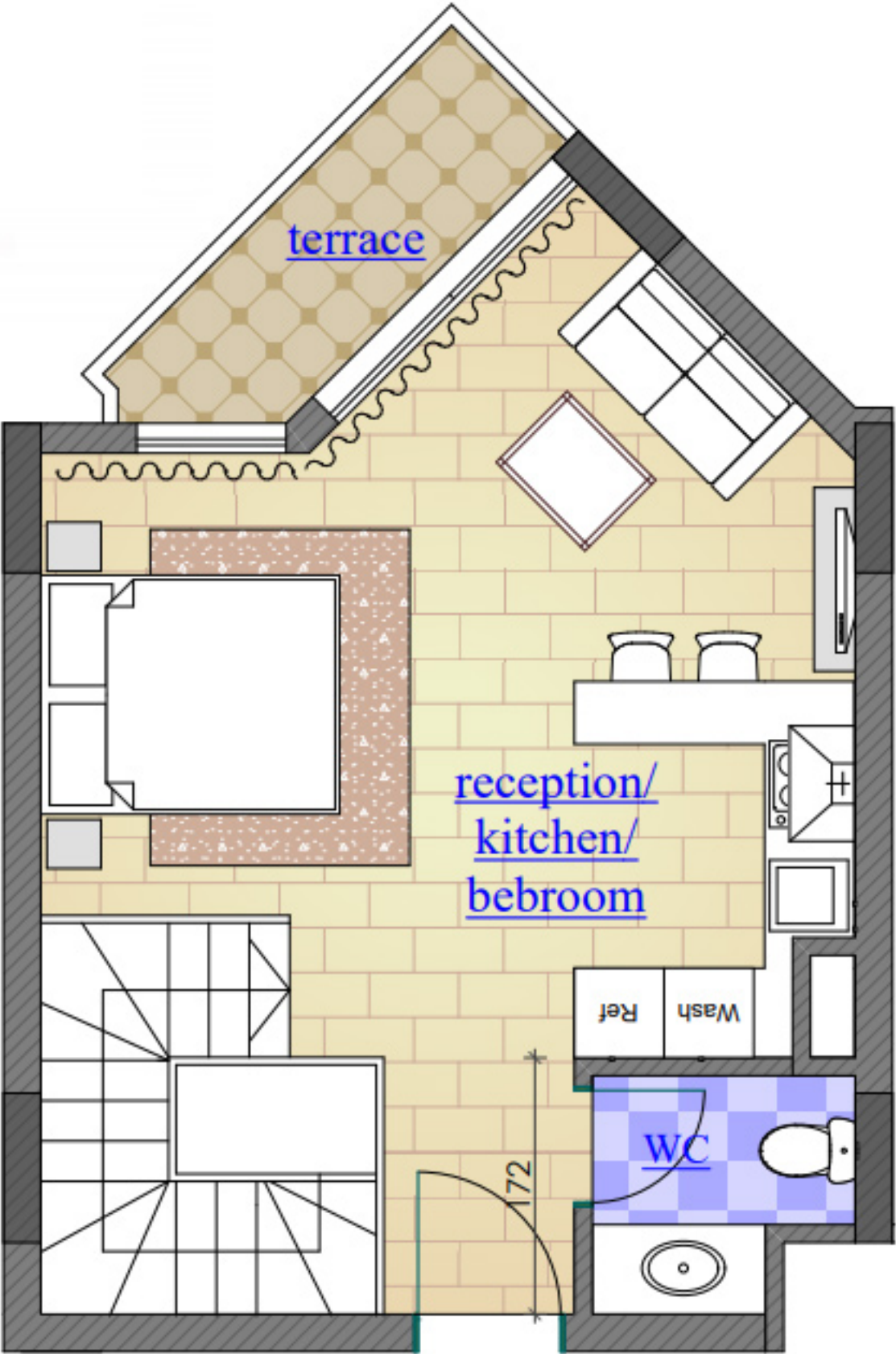
Apartment 72 sqm





Layout

2Bedroom Ka'ula Duplex 110 m2



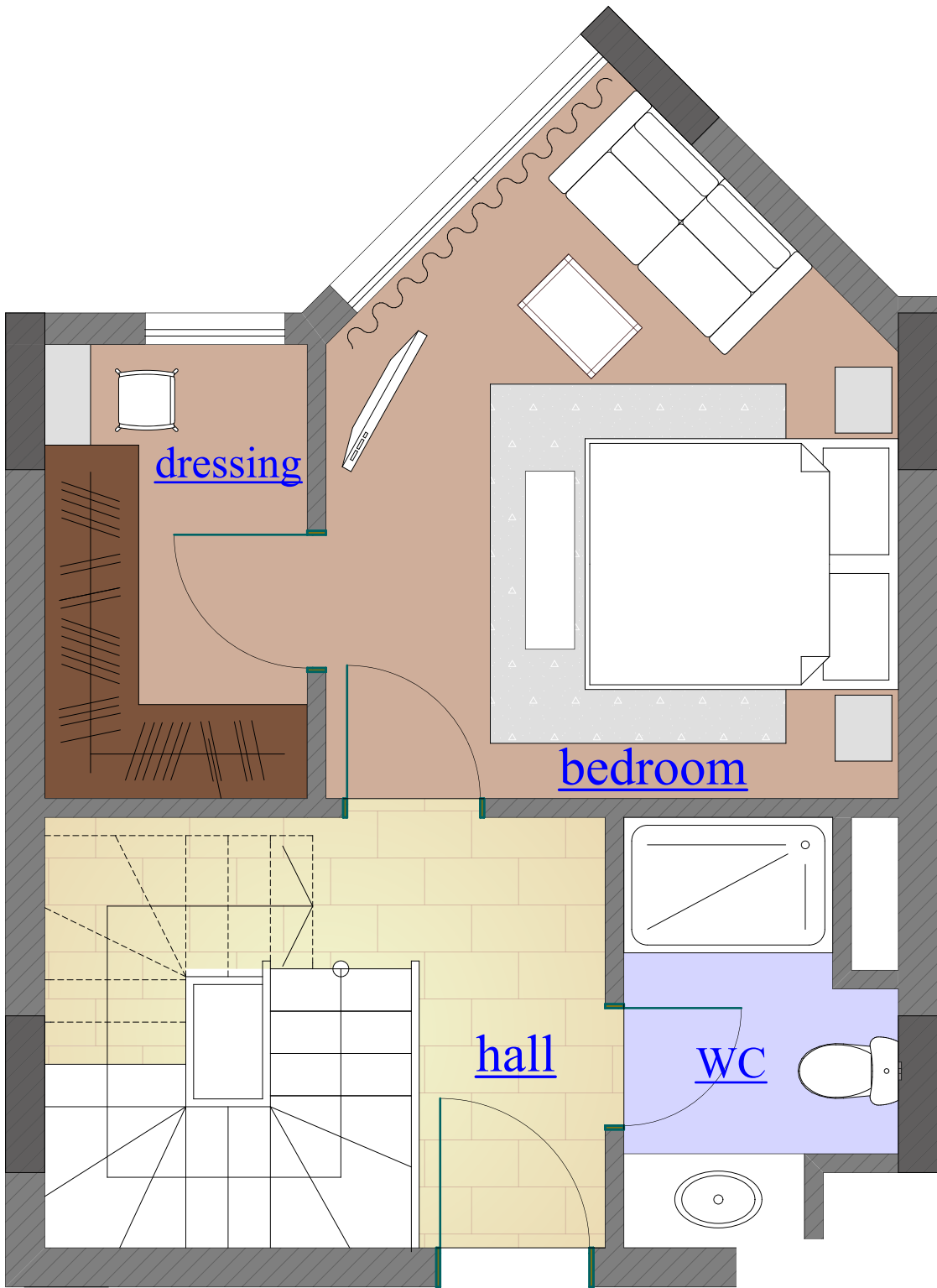
First floor

- Beginning
- Studio
- Bedroom 1
- 2 Bedrooms
- Ka'ula Duplex
- Honolulu Duplex
- Villa Tropicana
- Facilities
- Contact



# Layout

2Bedroom Ka'ula Duplex 110 m2



Ground floor

Beginning



Studio



Bedroom 1



2 Bedrooms



Ka'ula Duplex



Honolulu Duplex



Villa Tropicana



Facilities



Contact







## Design

2Bedroom  
Ka' ula Duplex 110 m2

Beginning



Studio



Bedroom 1



2 Bedrooms



Ka'ula Duplex



Honolulu Duplex



Villa Tropicana



Facilities



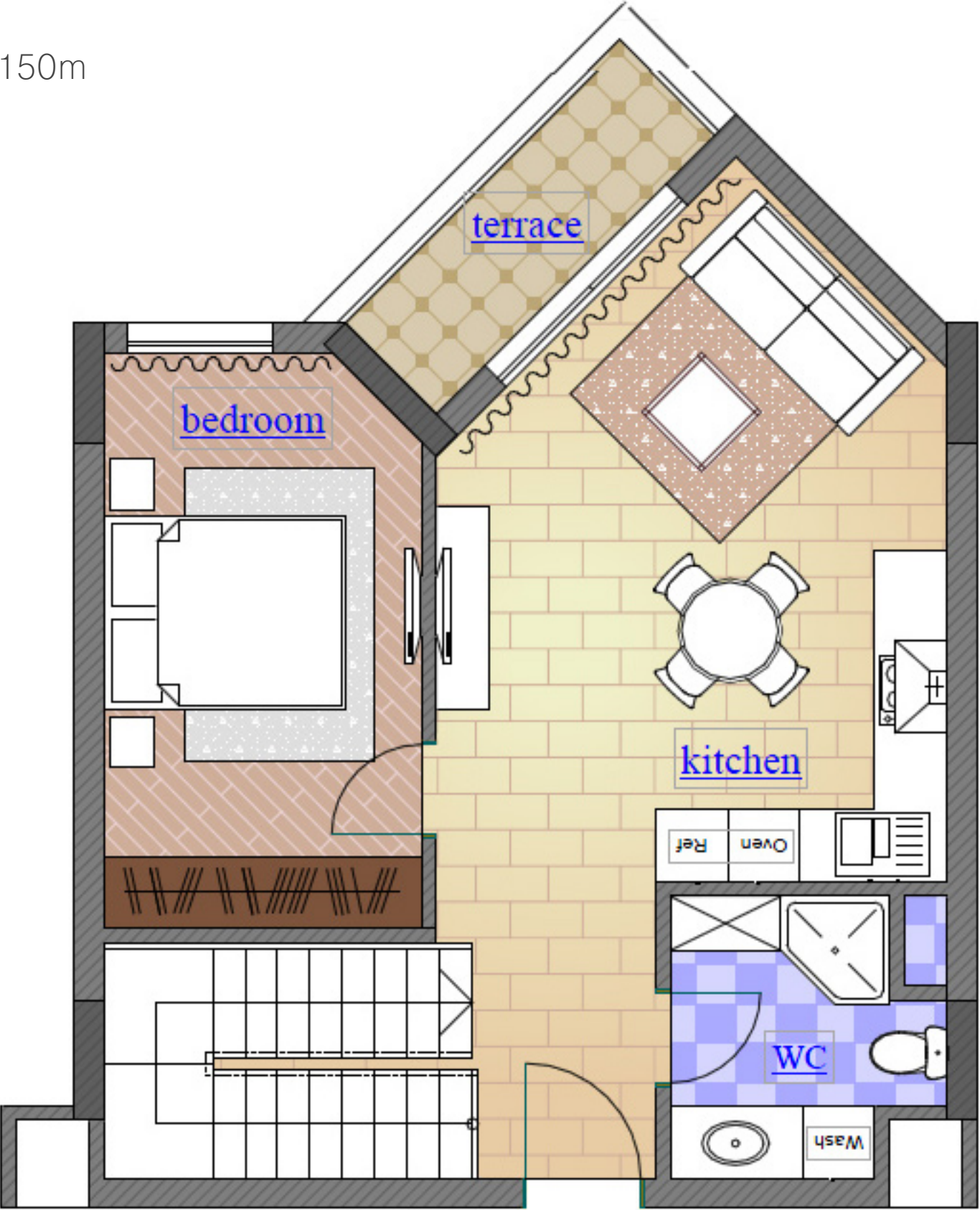
Contact





# Layout

3Bedrooms Honolulu Duplex 150m



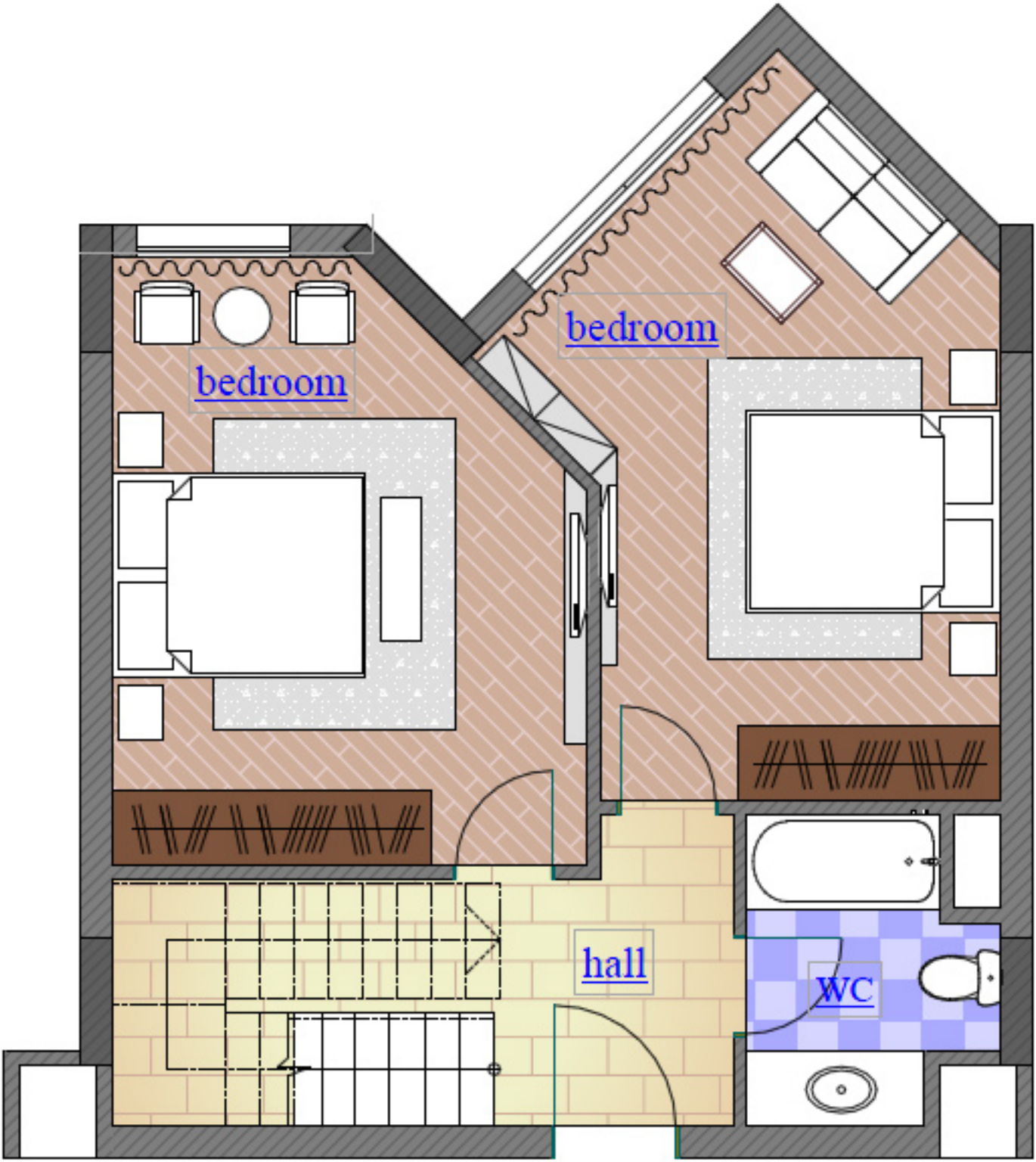
First floor

- Beginning
- Studio
- Bedroom 1
- 2 Bedrooms
- Ka' ula Duplex
- Honolulu Duplex
- Villa Tropicana
- Facilities
- Contact



# Layout

3Bedrooms Honolulu Duplex 150m



Ground floor

- Beginning ^
- Studio ^
- Bedroom 1 v
- 2 Bedrooms v
- Ka' ula Duplex ^
- Honolulu Duplex <
- Villa Tropicana v
- Facilities v
- Contact v




Design


3Bedrooms Honolulu Duplex 150m




Beginning 

Studio 


Bedroom 1 

2 Bedrooms 

Ka' ula Duplex 

Honolulu Duplex 

Villa Tropicana 

Facilities 

Contact 







B 5





B 6





B 11





Shuttle Bus from  
and to Airport and down  
town several times during the day



Swimming pool  
Access to the beach



Access to Two 18-Hole  
of Golf courses



Housekeeping  
service



Renting service by  
international property management



**HAWAII**  
Sahl Hasheesh

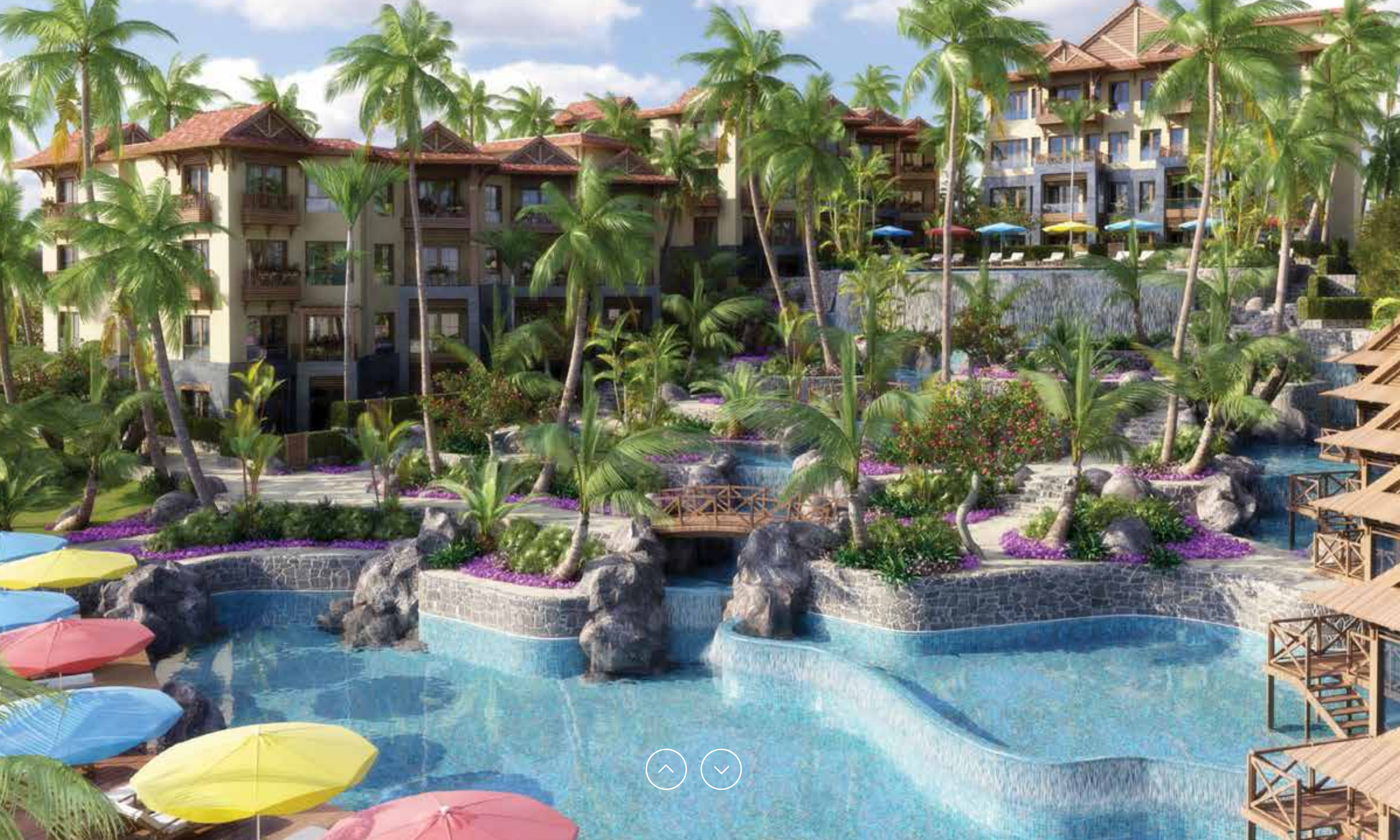




# Elite International Property Management Co









## Invest In Hawaii - Sahl Hasheesh



Our clients have fine investment opportunities:

### Remarkable Capital Gain

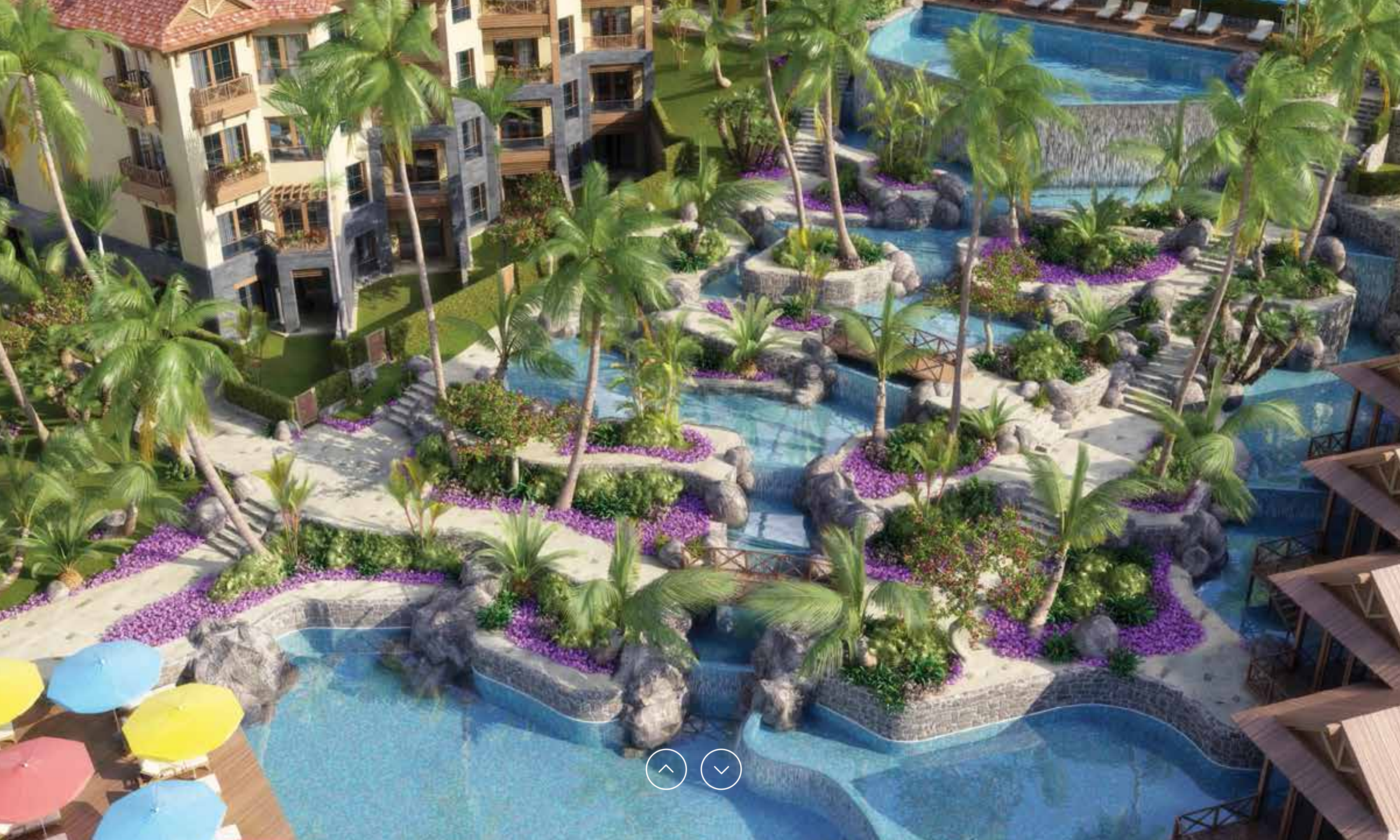
Buy and pay cash in the pre-launching period and enjoy our big discount then re-sell your unit in 24 months to enjoy an attractive capital gain.

### Attractive Yearly Yield

Buy and pay for your unit on 3 years installments and join our rental guarantee program and enjoy an attractive guaranteed yield













# Hawaii Resort – FAQ

## Where exactly the project is located?

Hawaii Project is located in the North part of Sahl Hasheesh, around 18km far away from Hurghada International Airport.

## What is the total area of the land .plot?

The land area is 20.630 sqm

## What exactly is the built up area for the project?

The built up area of project is 20% of total land area.

## What are the different types of units offered in Phase(1)?

Hawaii Sahl Hasheesh project offers:

Studios 52 m

1 Bedroom 72 m

Manana (1 Bedroom) 61 m

Manana (2 Bedrooms) 88 m

Kuala Duplex (2 Bedrooms) 110 m

Honolulu Duplex (3 Bedrooms) 150 m

## What is the starting price ?

Prices start from L.E 995.000 for cash payment

## What is different about the project ?

- \* Unique location where 90% of the units enjoy a fantastic sea view
- \* 1600m of swimming pools and water features
- \* Distinguished Hawaiian theme in buildings' facade, units' interior designs and landscape
- \* Luxurious interior design and furniture packages (Available upon Request)
- \* High quality of finishing materials and isolation features
- \* Professional Hotel's services managed by an International Hotel Company

## What are the main facilities provided in the project ?

Swimming pools, transportation to airport and down town, housekeeping, kindergarten, rental services. Enjoying ERC Loyal card facilities

## How can non Egyptian buyers benefit from owning a unit in Hawaii?

Non Egyptian buyers will enjoy a free hold ownership.

Non Egyptian buyers may ask for residency upon receiving their units.

A full legal Due Diligence should be presented by a well known & respectable law firm.

## Is there installments plan?

Installments plan up to 3 & 5 years without interest

## What about the gardens areas in the ground floors?

All apartments in ground floor have a private garden with min. area of 24.7 sqm, and max. of 172 sqm.

## Is there any beach access for the project ?

Yes, Access to old town beach and all other Sahl hasheesh beaches







HAWAII

Sahl Hasheesh

*Mahalo*